



Stop and rest a while after your walk.
Enjoy meals and select souvenirs!

Nanko Rest House

This restaurant serves meals (lunch only) and provides rest areas for visitors that carry unique Imperial Palace souvenirs.



Yonju Edo picnic lunchbox
(Four-layer stacked lunch mostly containing boiled or stewed dishes)
(Must be ordered in advance)

A stacked lunchbox featuring Edo-period dishes made with ingredients produced near Tokyo.

Ichijusansai Gozen daily lunch special

Traditional Japanese-style meal (one soup and three side dishes)

Kokyogaien Dorayaki

Sweet, elegant-tasting *dorayaki*, a delicacy consisting of plentiful sweet bean paste sandwiched between baked buns. The paste in this *dorayaki* is produced in Hokkaido's Tokachi region.

Kokyogaien Chrysanthemum-Shaped Monaka Bean-Jam Wafers

Made with azuki beans produced in the Tokachi region of Hokkaido, which is famous for them. These wafers are made using a traditional method passed down through generations in a noble Japanese family.

Rest House	Store
Opening hours 8:30AM-5:00PM (Lunch 11:00AM-2:00PM)	Opening hours 8:30AM-4:00PM Closures Open everyday
Closures From December 29 through January 1	Enquiries Tel: 03-3211-1056
Enquiries Tel: 03-3231-0878	

Japanese Sweet Parlor Kusunoki

A Japanese sweet parlor located next to the equestrian statue of Masashige Kusunoki. Visitors can take in the scenic pine groves while sitting atop benches modeled after seating used in casual open-air tea ceremonies and enjoying soft-serve ice cream with flavors such as "Gold Leaf Rice-Malt Molasses Vanilla."



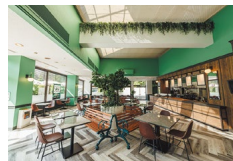
"Gold Leaf Rice-Malt Molasses Vanilla" Soft-Serve Ice Cream

An original and exquisite soft-serve ice cream treat containing swirls of rice-malt molasses that brings back the sweet taste of the Japan of old and wrapped in real gold leaf made by the Kanazawa-based Hakuichi.

Japanese Sweet Parlor Kusunoki
Opening hours 8:30AM-4:00PM
Closures Open everyday (Closed only for New Year's holiday)

Kitanomaru Rest House

At CAFÉ 33, you can enjoy a rich lineup of authentic Italian flavors, including homemade sandwiches, Pizza Altaglio, which originated in Rome, and tarts made with seasonal fruits.



Pizza Altaglio is CAFÉ 33's signature menu, made with homemade dough and baked daily at the facility's store.

Kitanomaru Rest House
Opening hours 9:00AM-5:00PM
Closures Open everyday
(Same as in Kitanomaru Park)
Enquiries Tel: 03-3214-3730

Enquiries

The National Gardens Association

(Kokyogaien Branch Office)

1-1 kokyo-gaien, chiyoda-ku, Tokyo Tel: 03-3231-5509

The Imperial Household Agency, Ministry of the Environment
Kokyo Gaien Kanri Jimusho



Kokyogaien National Garden and the East Gardens of the Imperial Palace and Kitanomaru Park have many delightful features each season.

Take this Garden handbook and go for a walk! Give your own star rating to each spot.

1 Double Bridge at the Palace



The "Double Bridge" is the iron bridge constructed at the front gate of the Imperial Palace. Its name comes from the original design (a double wooden structure) in 1614.

2 Sakurada-mon Gate



This is the largest existing castle gate at the palace, renovated in 1636. It is widely known as the location for the Incident Outside Sakurada Gate historical event, which ended with the assassination of chief minister Naosuke Ii in 1860. Designated as an important cultural property.

3 Statue of Masashige Kusunoki



This is a bronze statue of Masashige Kusunoki (also known as "Nanko") made from copper produced in the Besshi copper mine. Crafted by Koun Takamura and others over the course of a decade.

4 Ote-mon Gate



In the Edo period, this gate was called Honmaru Ote-mon (main gate for the castle keep), and used by numerous *daimyo* (feudal lords) and samurai warriors. Its walls still have the original gun holes.

5 Hyakunin-Bansho checkpoint



This was the site of the largest military checkpoint for Edo Castle. Its 50-meter room accommodated 100 constables, earning it the nickname Hyakunin-Bansho (hundred-person checkpoint).

6 Remains of the castle tower



Firstly completed in 1607 under the second Shogun Hidetada Tokugawa and enlarged in 1638 under the third Shogun Iemitsu Tokugawa, this castle tower is Japan's largest at 58 meters high. It is seen as a symbol of the authority of the Edo shogunate.

Edo Castle

Constructed in 1457 by the famous castle builder Dokan Ota, Edo Castle became the home of the Tokugawa shogunate family once Ieyasu Tokugawa occupied it in 1590. After the Edo shogunate was in place, the castle was also used as a top-level government office. It was renamed Kokyo (the Imperial Palace) in 1948.

7 Kitahanebashi-mon Gate



Kitahanebashi-mon Gate was extremely important during the Edo period, since it was located just behind the castle tower. The heavily guarded bridge was also surrounded by the highest stone wall at the castle. It is a drawbridge constructed on the castle mound.

8 Hirakawabashi Bridge

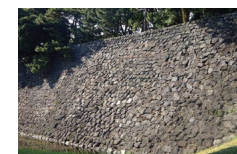


Once used as a service entrance for the O-oku (the shogun's harem), this wooden bridge has a beautifully-curved drum shape. Like the Wadakurabashi Bridge, it is one of the last remaining bridges from the Edo period. Ornamental caps on the railing contain engravings from the Keicho and Kanei periods.

Stone wall

Great spots

This stone wall served as a barrier to defend against enemy attacks, while also preventing stopping soil avalanches from the slope. It includes a variety of laid stones, some of which are described below.



Takaishigaki

This huge wall is an imposing sight. Its size strongly indicates the importance of the castle within. The wall is thought to have been built by master castle builders such as Kato Kiyomasa and Todo Takatora.



Sangi-zumi

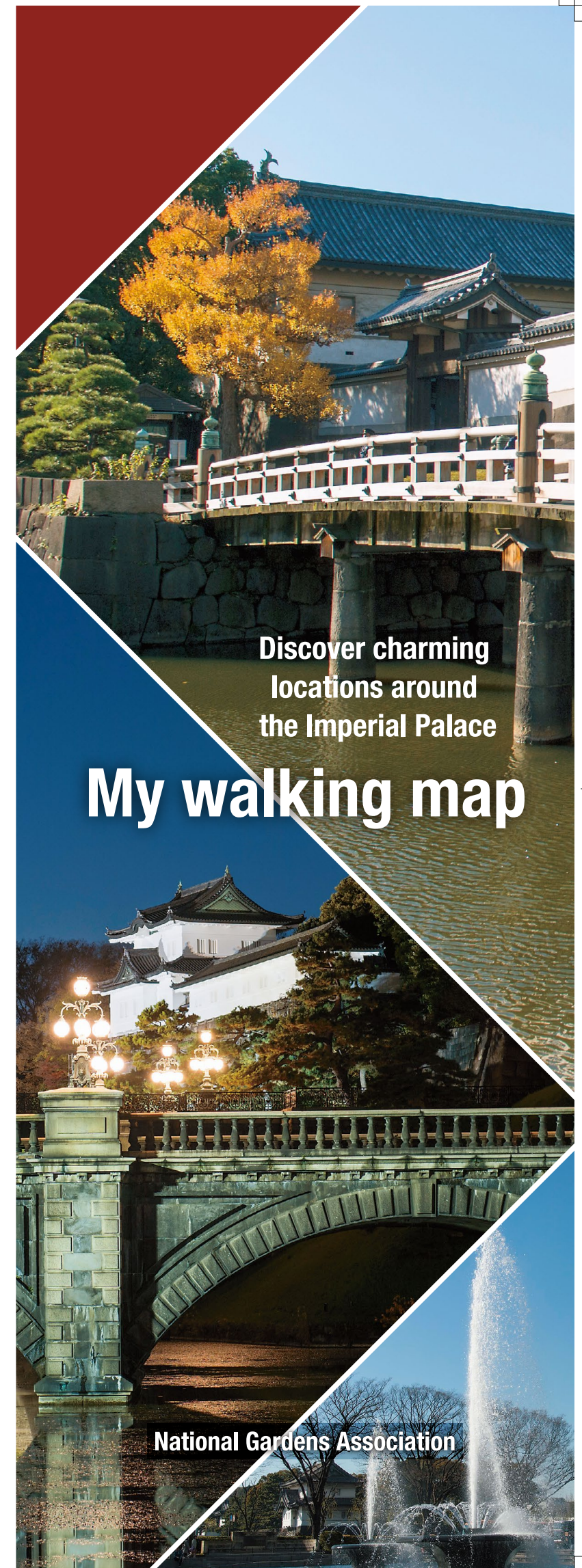
This method is used to create corner projections. It involves alternately stacking rectangular stones the long way and short way to maintain strength.



Dorui-shiki

Dorui-shiki involves a three-layer structure. The bottom layer has stones at the bottom, the second layer has stones in the middle with a 3-meter flat portion on top, and the top layer has 3-meter stones on top.

Notes:
Images are the property of the National Gardens Association and used with permission. Commentary is based on *Kokyo no Shiki and Hana Monogatari* (Seasonal flower scenes at the Imperial Palace).



Discover charming locations around the Imperial Palace

My walking map

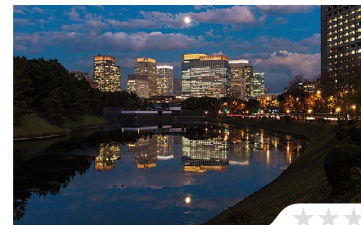
National Gardens Association

Great spots around The Imperial Place

My walking map

Here we present a list of must-see spots and great photo opportunities in the Imperial Palace. Check the stars to mark the places you've visited on your custom map.

01 Amazing night view of the business district
Night view of Sakurada-bori Moat



Beautiful night views of the Marunouchi business district can be seen between the Miyakezaka intersection and the front of the National Diet Building.

MAP 1

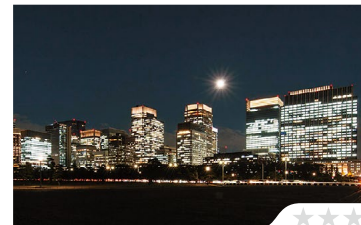
03 Edo stone wall with modern architecture
Skyscrapers viewed from around Sakurada-mon Gate



See the modern business district through the old stone wall. This scene can be viewed on the way to the circle after entering through Sakurada-mon Gate.

MAP 3

05 Fully enjoy beautiful light displays
A group of buildings viewed from the plaza at the Imperial Palace at night



Office buildings stretch out at night in a view of the Marunouchi side from the plaza at the Imperial Palace.

MAP 5

07 The best spot to photograph Tokyo Station from the front
Tokyo Station from Gyoko-dori Street



Tokyo Station, with its Western-style brick architecture, can be viewed with the line of ginkgo trees standing at Wadakura-mon junction on Gyoko-dori Street.

MAP 7

02 Edo scenes meet modern architecture
Sakurada-mon Gate and the National Diet Building



View of the National Diet Building diagonally from the right, in front of the gate. Look through the Sakurada-mon Gate to see the National Diet Building framed like a picture.

MAP 2

04 Lighted tower viewed between the buildings
Tokyo Tower from the Iwaida-bashi Bridge



Tokyo Tower seen between the buildings. View from the road at the intersection of Uchibori-dori Avenue and Iwaida-bashi Bridge on the Gaisen-bori Moat side.

MAP 4

06 Historical buildings are beautifully reflected on the water surface
The Old Dai-ichi Seimei Building (DN Tower 21) and the Edo Castle moat



Completed in 1938, this building was temporarily taken over by the occupation forces and used as the General Headquarters.

MAP 6

08 Get three historical structures in one shot!
Tatsumi-yagura Watch Tower, Fujimi-yagura Watch Tower, and Kikyo-mon Gate



Tatsumi-yagura Watch Tower, Fujimi-yagura Watch Tower and Kikyo-mon Gate can be photographed in a single shot along with the Edo Castle moat if you stand next to the police station.

MAP 8



Standard walking times

Double Bridge at the Palace	1	Ote-mon Gate	4	15 min. by foot
Ote-mon Gate	4	Kitanebashi-mon Gate	7	10 min. by foot
Kitanebashi-mon Gate	7	Tayasu-mon Gate	10	10 min. by foot

Outer ring : about 5km

Free bus circulator

- Runs every 12~15 minutes daily between 8:00 AM and 8:00 PM
- Shin-Marunouchi Building
 - Yusen Building
 - Marunouchi MY PLAZA
 - Tokyo Kaikan
 - The Old Dai-ichi Seimei Building

09 Beautiful reflections on the water surface
Skyscrapers reflected on the surface of the Edo Castle moat



On a sunny day, the silhouette of the skyscrapers can be clearly seen on the surface of the castle moat.

MAP 9

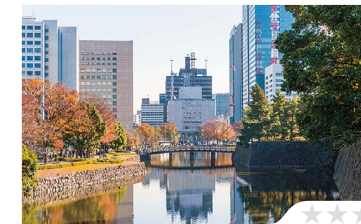
10 Healthy, strong ginkgo tree
Ginkgo tree that survived the Great Kanto earthquake of 1923



This mature ginkgo miraculously endured devastating fires caused by the Great Kanto earthquake.

MAP 10

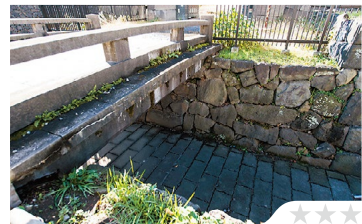
11 Beautifully shaped wooden bridge
Hirakawa-bashi Bridge and the Edo Castle Moat



This graceful arched bridge is reflected on the water in the moat with a backdrop of modern buildings.

MAP 11

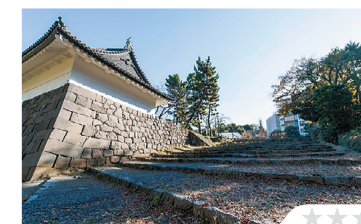
12 A water gate preserved from the Edo period
Shimizu-mon water gate



This water gate is constructed under a small bridge just outside of Shimizu-mon Gate. It features a preserved Edo-style stone wall.

MAP 12

13 This stone-paved stairway has been preserved from the Edo period
Log slope near Shimizu-mon Gate



This is the only log slope remaining in original condition from the Edo period. It was constructed to prepare for an enemy attack.

MAP 13

14 Spot overlooking Tayasu-mon Gate
Tayasu-mon Gate from the Imperial field headquarters



The Imperial field headquarters and Yayoi Memorial Hall are on top of the narrow stairway beside Tayasu-mon Gate.

MAP 14

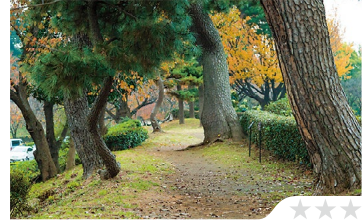
15 A tranquil spot in the heart of downtown
Waterfall in Kitanomaru Park



Heal yourself with the sounds of flowing water, located near the Iwaen statue.

MAP 15

16 Only road preserved on the embankment
Embankment on Daikancho-dori Street



There is a walking path on the small hill after walking the right side of Daikancho-dori Street towards Hanzomon-Gate. Offers a birds-eye view of Chidorigafuchi.

MAP 16